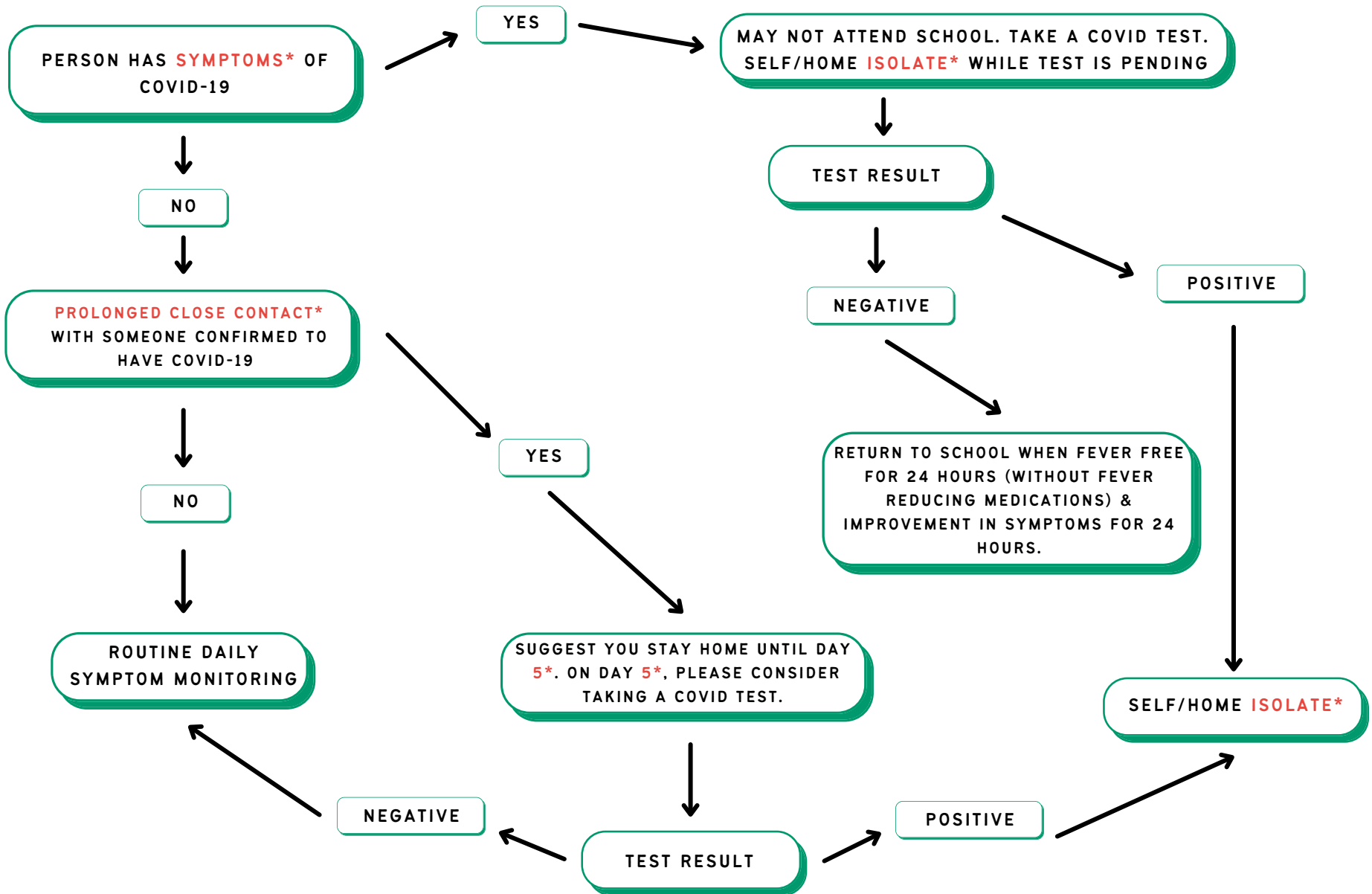


*DEFINITIONS ON PAGE 2

START HERE



DEFINITIONS

SYMPTOMS** OF COVID-19 TYPICALLY INCLUDE- COUGH, SHORTNESS OF BREATH, FEVER**, CHILLS, MUSCLE PAIN, NEW LOSS OF TASTE OR SMELL, VOMITING OR DIARRHEA, AND SORE THROAT. IF YOU HAVE A **FEVER AND ANY ADDITIONAL SYMPTOM LISTED ABOVE, DO NOT ATTEND SCHOOL, TAKE A TEST, AND FOLLOW DIRECTIONS ON THE FLOW CHART

***FEVER** IS A TEMPERATURE OF AT LEAST 38.0C (100.4F)

ISOLATE & 5- PEOPLE WITH COVID-19 SHOULD SELF/HOME ISOLATE ACCORDING TO CURRENT ISOLATION GUIDELINES FROM THE KALAMAZOO COUNTY HEALTH DEPARTMENT.

***PROLONGED CLOSE CONTACT** - PROXIMITY OF LESS THAN 6 FEET AND EXPOSURE FOR GREATER THAN 15 MINUTES OVER A 24 HOUR PERIOD. THE 5 DAY INTERVAL BEFORE TESTING AFTER A PROLONGED CLOSE CONTACT BEGINS FOLLOWING THE LAST CONTACT WHEN THE PERSON INFECTED WITH COVID-19 WAS CONSIDERED INFECTIOUS.

THE MONTESSORI SCHOOL STAFF HAS THE AUTHORITY TO DETERMINE ILLNESS AND DECIDE WHEN A CHILD IS NOT HEALTHY ENOUGH TO ATTEND SCHOOL BASED ON CDC GUIDELINES, DIRECTION FROM THE STATE OF MICHIGAN OR KALAMAZOO COUNTY, MI SAFE SCHOOLS ROADMAP, OR OTHER CLINICAL RESOURCES.